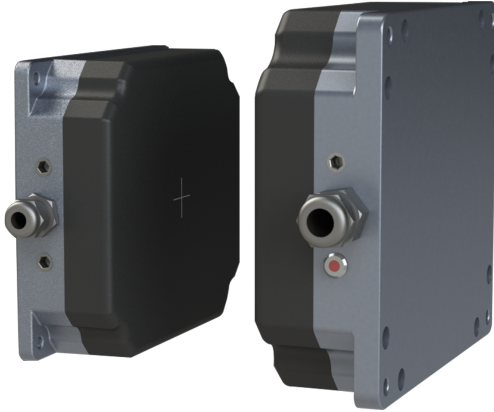


WIRELESS CHARGING

AB-WLC-1200

ATOMBOTIX



High Efficiency & Energy Saving



90% transmission efficiency cuts energy use, speeds up charging, boosts energy efficiency, and cuts costs.

Flexible Adaptation



Constant-current to constant-voltage charging management smartly suits diverse devices. It precisely handles low-battery quick charging and full-battery trickle charging for optimal results.

Safety & Reliable



The contactless charging mechanism eradicates the potential hazards of electric shock and current leakage, ensuring a secure and dependable charging experience.

Robust & Durable



IP67-rated transmitter and receiver. The sealed design resists dust and water. Stable in any setting, from dusty outdoors to humid indoors, it offers lasting, reliable charging.

Model	AB-WLC1200-48V20A
Electrical Parameter	
Rated Power	1200W
Pre-stage Power Supply Voltage Input	90-264 VAC
Rated Output Voltage Range	40 - 60 VDC
Rated Output Current Range	0 - 20 A
Max. Transmission Efficiency	90%
Essential Parameters	
Vertical Working Distance	30 - 50 mm
Maximum Horizontal Offset Distance	Long - axis 20mm, short - axis 10mm
Charging Management	Constant - current & constant - voltage
Over-temperature Protection	Support
Output Over-current Protection	Support
Output Over-voltage Protection	Support
Communication	RS485 , CAN
Alarm and Charging Status Indication	Indicator light alarm
RF Data Communication Frequency	2.4GHz
Cooling Method	Natural cooling

Dimensions

Transmitter Size	190mm × 170mm × 60mm
Receiver Size	190mm × 170mm × 60mm
Transmitter Weight	3 kg
Receiver Weight	2.3 kg

Environment Parameters

Working Temperature	-20°C - 45°C
Working Humidity	0 - 85%
Storage Temperature	-25°C - 85°C

Protection Level

Emitter Protection Level	IP67 (Encapsulation)
Receiver Protection Level	IP67 (Encapsulation)

